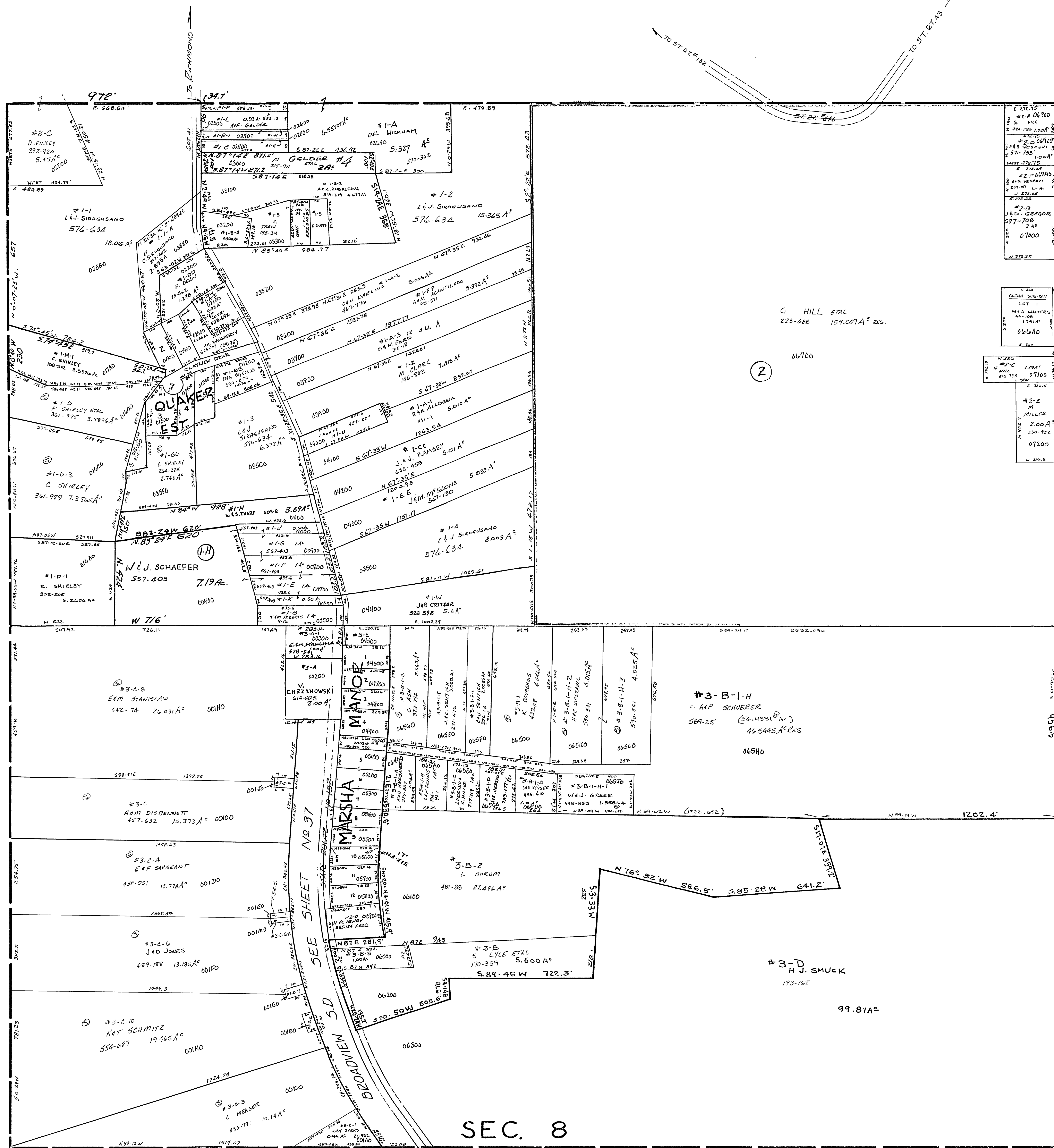


24-0800-



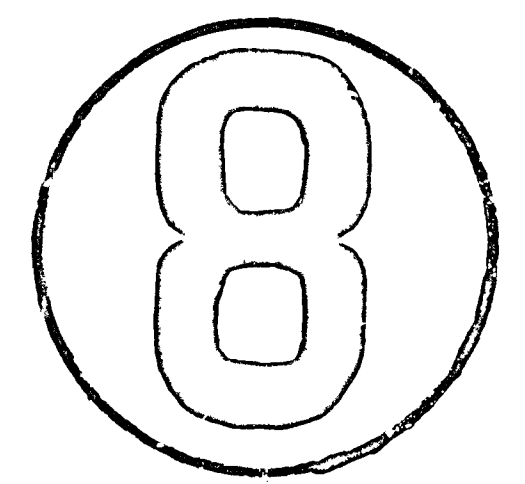
- #3-C-2 170 AND 77 385.946 0.109 A
- #1-D-2 C. SHIRLEY 361.989 0.3945 A
- #1-K J.B. GELDER 315.330 0.10 A
- #1-C J. GELDER 611.178 0.50 A
- #1-N M. ROWLAND 472.674 0.10 A
- #1-R-1 M. ROWLAND 472.674 0.40 A
- #1-E E. ROSE 301.01 0.64 A
- #1-B-2 R. MILLER 80.215 0.934 AC.
- #3 A.P. SCHNEBER 597.25 0.303 A
- #3-B-3 L. BOKUM 481.88 1.0095 A
- #3-B SEE SECTION 9
- #3-A-7 SEE SECTION 9

- MARSHA MANOR S.D.
- LOT 1 M. MILLER 530-123
 - 2 D. SHIELDS 537.76 102 X 220
 - 3 D. SHIELDS
 - 4 M. SNODGRASS 439.289 145 X 220
 - 5 R.E. POLSINELLI 61-500 100 X 220
 - 6 E.V. DATHMAN 582-975
 - 7 E.V. DATHMAN 530-664
 - 8 K. YOCUM 278-878
 - 9 FET LONG 524-537 100 X 220
 - 10 J.D. JACKSON 617-116
 - 11 K. BAKER 74-901
 - 12 K.L. BAKER 114-509

- QUAKER ESTATES S.D.
- 1 CAT ACANTILADO 32-481 0.5437 A
 - 2 B.C. GREENLEE 22-223 0.5839 A
 - 3 EM. WILSON 504-955 0.7781 A
 - 4 R.L. KUESTER 377-817 0.8257 A
 - 5 R.L. KUESTER 360-917 0.5493 A

- #3-C-5 E.F. SARGENT 507-290 0.057 A
- #3-C-6 A.M. JONES 507-293 0.057 A
- #3-C-7 J.D. JONES 439-185 0.115 A 1/2 INT. EACH (KAT SCHMITZ 554-687)
- #3-C-8 E.M. STANISLAU 442-74 26.031 A 0010
- #3-C-9 E.F. SARGENT 439-501 12.778 A 0010
- #3-C-10 J.D. JONES 439-188 13.185 A 0010
- #3-C-11 KAT SCHMITZ 554-687 19.465 A 0010
- #3-C-12 C. HERBERG 439-191 10.144 A 0010

SALEM TOWNSHIP
SECTION 8, TWP. 10, RANGE 3.
SCALE: 1" = 200'
1958



116